

## STRIPE BAR TOWELS

- White w/colored center stripe
- Full Terry
- 10/single yarn
- 100% Cotton
- Bale packed



STYLE	DESCRIPTION	SIZE	WEIGHT/DZ.	PACKED
⚡ #17043	Terry Green Stripe	16 x 19	30 ounce	100 dozen
⚡ #17050	Terry Blue Stripe	16 x 19	32 ounce	100 dozen
⚡ #17060	Terry Gold Stripe	16 x 19	32 ounce	100 dozen

## ULTRA-SOFT MICROFIBER TOWEL

- Holds up to 7 times their weight in liquid
- Polishes, buffs and shines
- Lifts and traps dirt, grease, waxes and oils



STYLE	SIZE	WEIGHT/EA.	COLOR	PACKED
⚡ #44110	16 x 16	58 gram	Yellow	2 dozen
⚡ #44111	16 x 16	49 gram	Blue	1 dozen
⚡ #44112	16 x 16	49 gram	Green	1 dozen
⚡ #44113	16 x 16	49 gram	Red	1 dozen

## VACUUMS



Style #10300

- 12 pounds
- 5 amps
- 30 foot cord
- 12" path
- 6 carpet positions



Style #10302

- Light weight, yet built to commercial standards
- 5 amp
- 12" path
- 30 foot cord
- 4 carpet positions
- Height and handle adjustments

STYLE	DESCRIPTION	AMP
⚡ #10300	Tempo Tools-on-board Vacuum Cleaner by Hoover	5
⚡ #10302	Sanitaire Commercial Bagless Vacuum	5

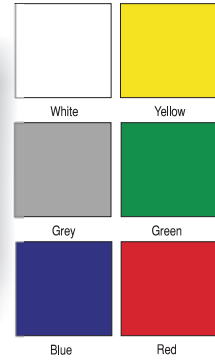
## MAID CARTS



**MaxTex has a maid cart to fit your specific housekeeping needs. Please call your sales representative for details.**

**EXTRA DUTY LAUNDRY TRUCKS**

- Most popular, very versatile truck
- Choose Heavy Duty Natural White Canvas, Easy Clean Yellow Glosstex
- Additional Glosstex colors available for additional \$15 cost - 6 truck min.
- Electro-welded high tensile spring steel frame
- Sewn-on liner replacements available
- Fabric handles for easy maneuverability
- Work Identification pocket
- Rust resistant welded steel bottom support
- Hardwood runners and wheelboards
- Composition or hard rubber casters
- Choose your caster pattern
- Sanitary caps, liners and lifts available



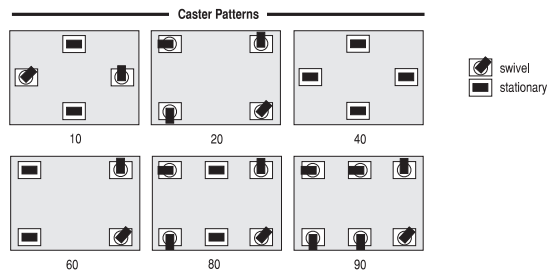
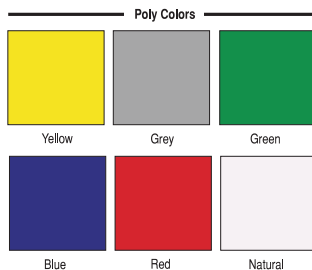
STYLE	CAPACITY	DIMENSIONS	WHEELS
#22020	12 bu	36l x 26w x 34oh	3 inch caster
#22025	16 bu	40l x 28w x 37oh	3 inch caster
#22030	20 bu	48l x 32w x 37oh	3 inch caster

**POLY TAPER TRUCKS**

- One-piece rotationally molded body
- Snag-free interior
- Heavy Duty Rust resistant steel base
- Step side construction for added wall strength
- Rounded top lip



STYLE	DESCRIPTION	CAPACITY	DIMENSIONS	WHEELS
#22090	Taper Truck	12 bu	35l x 25w x 33oh	3 inch caster
#22095	Taper Truck	14 bu	39l x 27w x 32.5oh	3 inch caster
#22100	Taper Truck	16 bu	39l x 27w x 34.75oh	3 inch caster
#22105	Taper Truck	18 bu	44l w 28w x 30.5oh	3 inch caster



**LAUNDRY BAGS**

- Other sizes, colors and features available.
- We can create a bag to suit your specific needs.
- Call your Maxtex sales representative for pricing and details.



STYLE	DESCRIPTION	SIZE	COLOR	PACKED
⚡ #56060	Heavy Twill, Drawstring Closure	30 x 40	White	50 each
⚡ #56700	Polyester Mesh, Drawstring w/Slide Lock, ID Tag	15 x 22	White	10 each
⚡ #56702	Polyester Mesh, Zipper Closure, Grommet, ID Tag	15 x 22	White	10 each
⚡ #56704	Polyester Mesh, Zipper Closure, Grommet, ID Tag	18 x 30	White	10 each